

KONE

Dedicated to People Flow™

Being Published Since 2005

June 2017

Total Pages 78 Including Cover

₹150/-

Vol. 5 Issue 03

# MGS Architecture

Modern Green Structures &

Interior & Design

An NBM Media Group Publication

SELF-DRILLING SCREWS



HR ECONOMICAL TOUCH

HT FASTENERS

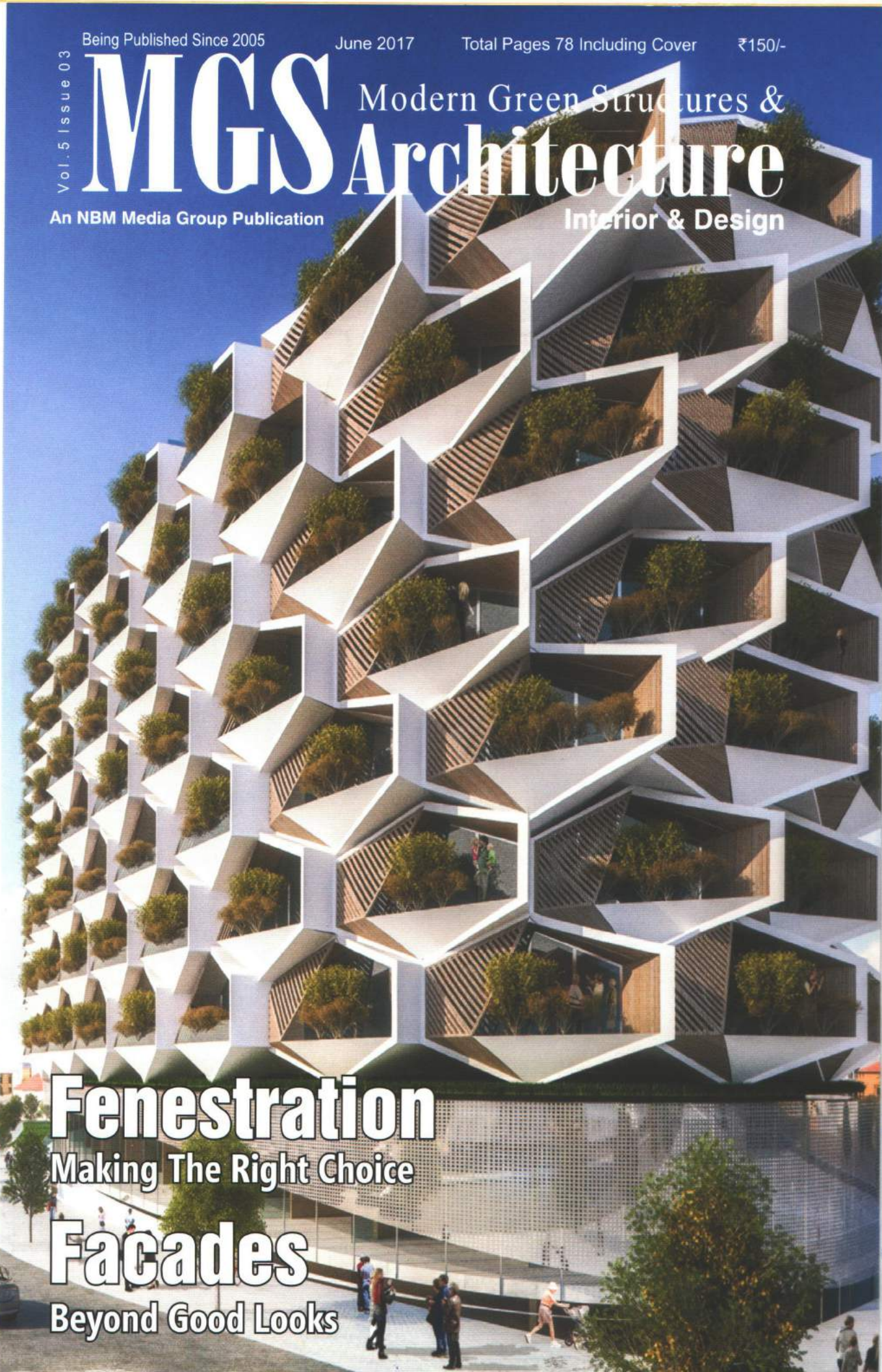
DESIGNED TO DELIGHT

## Fenestration

Making The Right Choice

## Facades

Beyond Good Looks



# Cyberwalk, Manesar

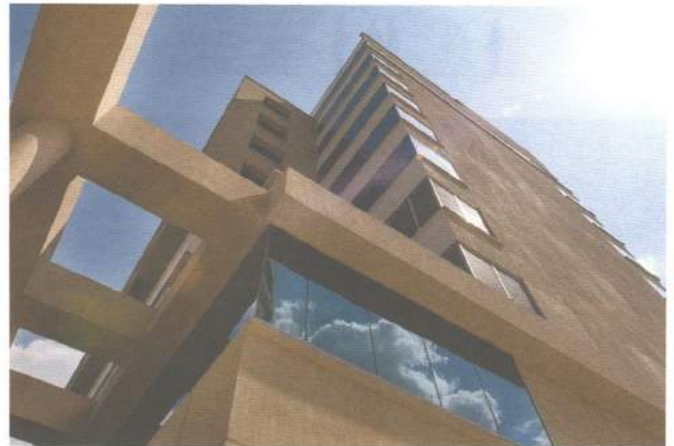
**Architect:** Goonmeet Singh Chauhan,  
**Firm:** Design Forum International (DFI)

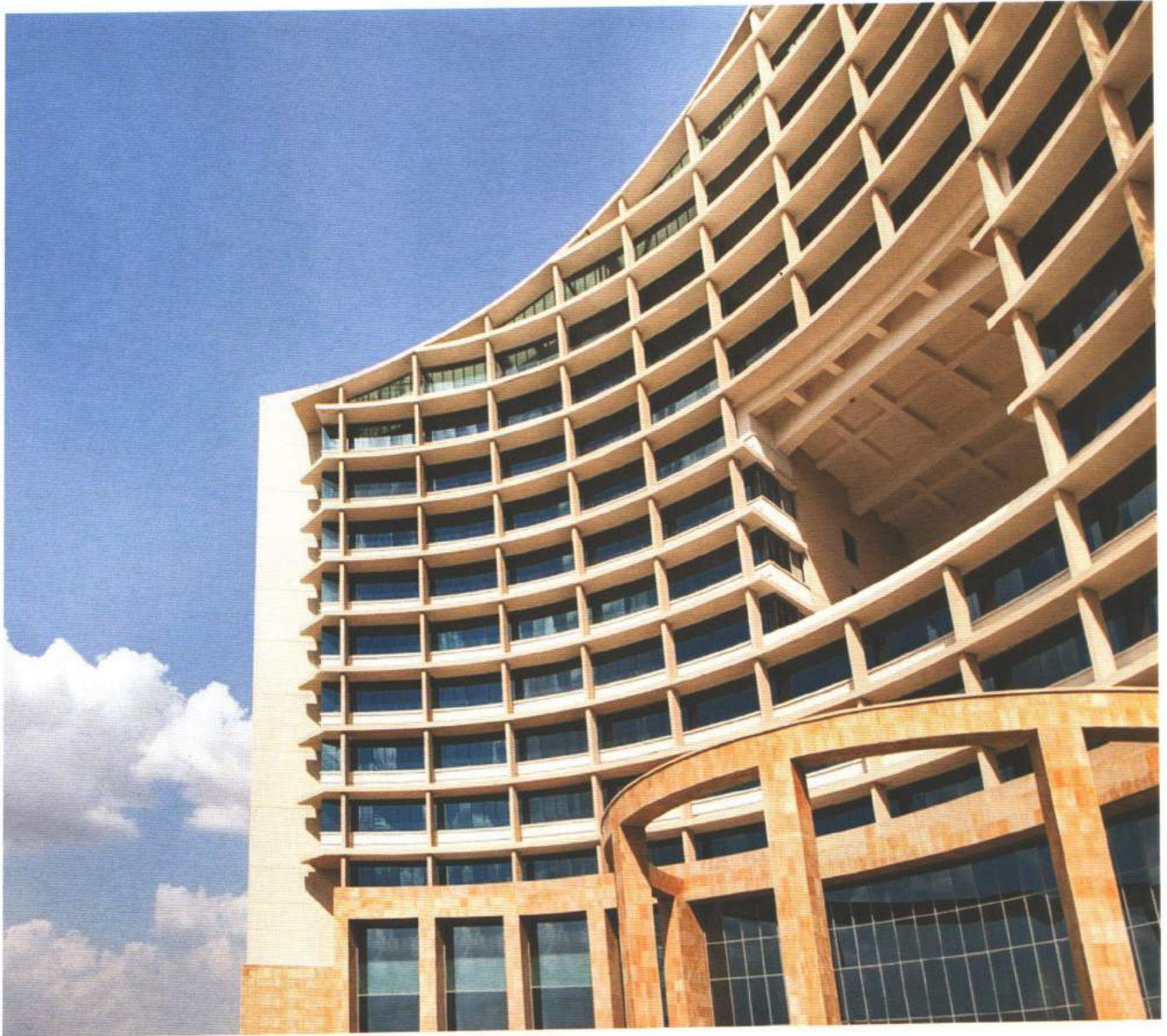


The architect aspires for architecture that scales new heights of glory. And when it is about high performance glass, the result is a spectacular expression of class, contemporary style and classic architecture. Cyberwalk – the first Leed Gold certified building in Manesar, Haryana, was conceptualized as a self-sufficient green building. Its campus is enveloped by an oasis of green, and designed to utilize the natural resources of sunlight, air, water and power in the most efficient manner.

Cyberwalk has a dedicated 25000 to 38000 sqft commercial office space. Since the building aimed at a LEED rating, the architect wanted a glass that would ensure energy-efficiency. High performance glass Envision was chosen to meet the parameters of this green building. SGG Envision is a high performance glass with excellent thermal insulation properties

and high spectral selectivity. It delivers a superior performance, ensures abundant light transmission and is relatively more transparent than other solar control glasses. With the extensive use of high performance





glass Cyberwalk has become an exceptional model for green architecture. Cyberwalk shows the commitment towards creating an environment friendly, efficient and lower operating cost facility in line with the space requirements of a corporate office occupier.

The project demonstrates a deep commitment towards creating an environment-friendly, efficient facility that operates at lower costs, designed to be in line with the requirements of the contemporary Indian corporate office. The central spill-out zone with interactive plaza with walkways, water bodies, sitting areas and greenery, full of trees, plants and lush greenery, far away from the methodical office space made of bricks and mortar only. ◆